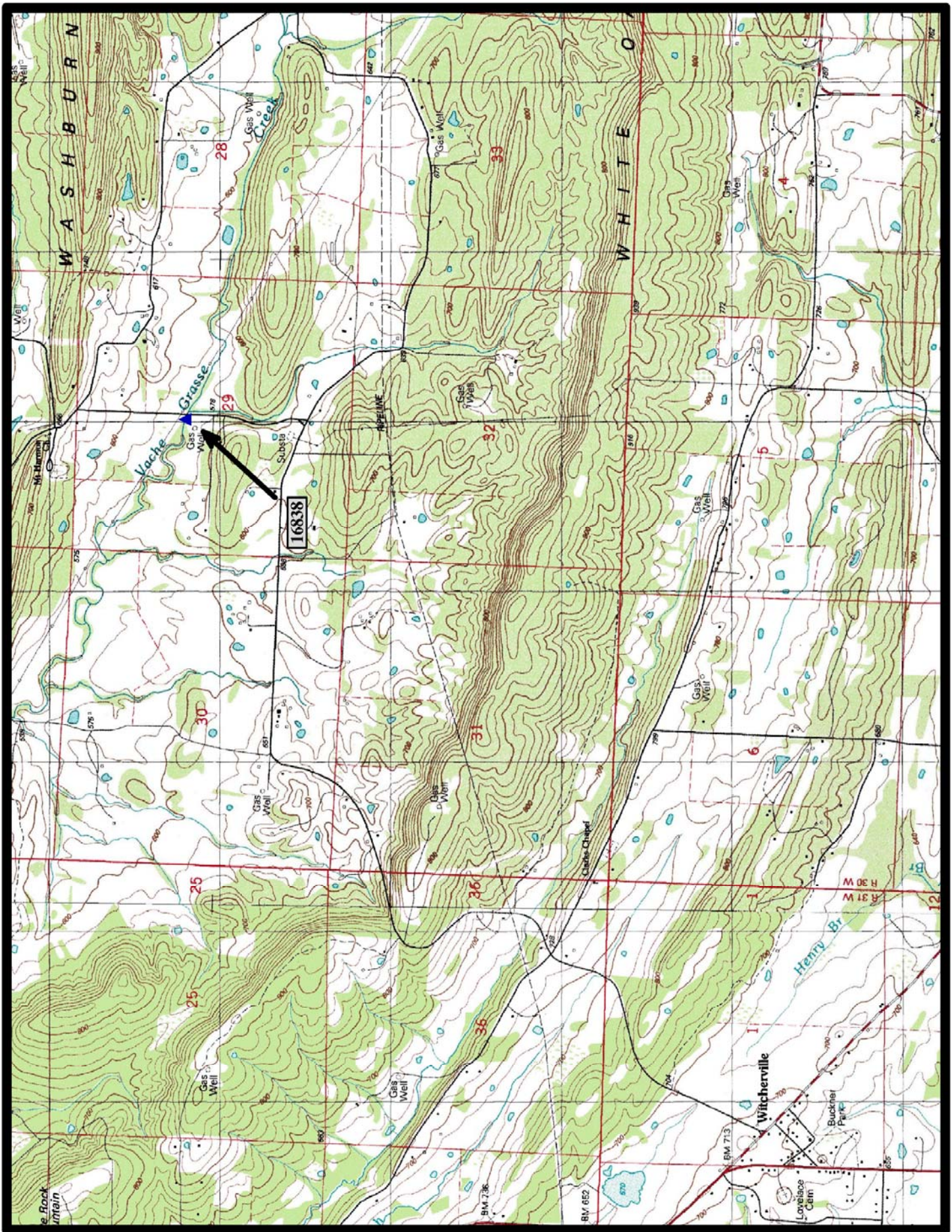




HISTORIC BRIDGE #16838
LEFLEUR ROAD (Co. Rd. 215)
SEBASTIAN COUNTY
STEEL MULTI-BEAM
CROSSES - VACHE GRASSE CREEK
DATE OF CONSTRUCTION – 1941
BUILDER - WORKS PROGRESS ADMINISTRATION (WPA)
HISTORIC BRIDGE INVENTORY DATE - 2010
SHPO NUMBER -
HAER NUMBER -
DATE LISTED ON NATIONAL REGISTER -
LAT./LONG. 35:10:06.22, -94:13:07.27



North

Burnville 7.5 min. Quad



**HISTORIC BRIDGE #18211
BROOMFIELD ROAD (Co. Rd. 23)
POPE COUNTY**

STEEL MULTI-BEAM

CROSSES - NORTH FORK LITTLE CREEK

DATE OF CONSTRUCTION - 1941

BUILDER - WORKS PROGRESS ADMINISTRATION (WPA)

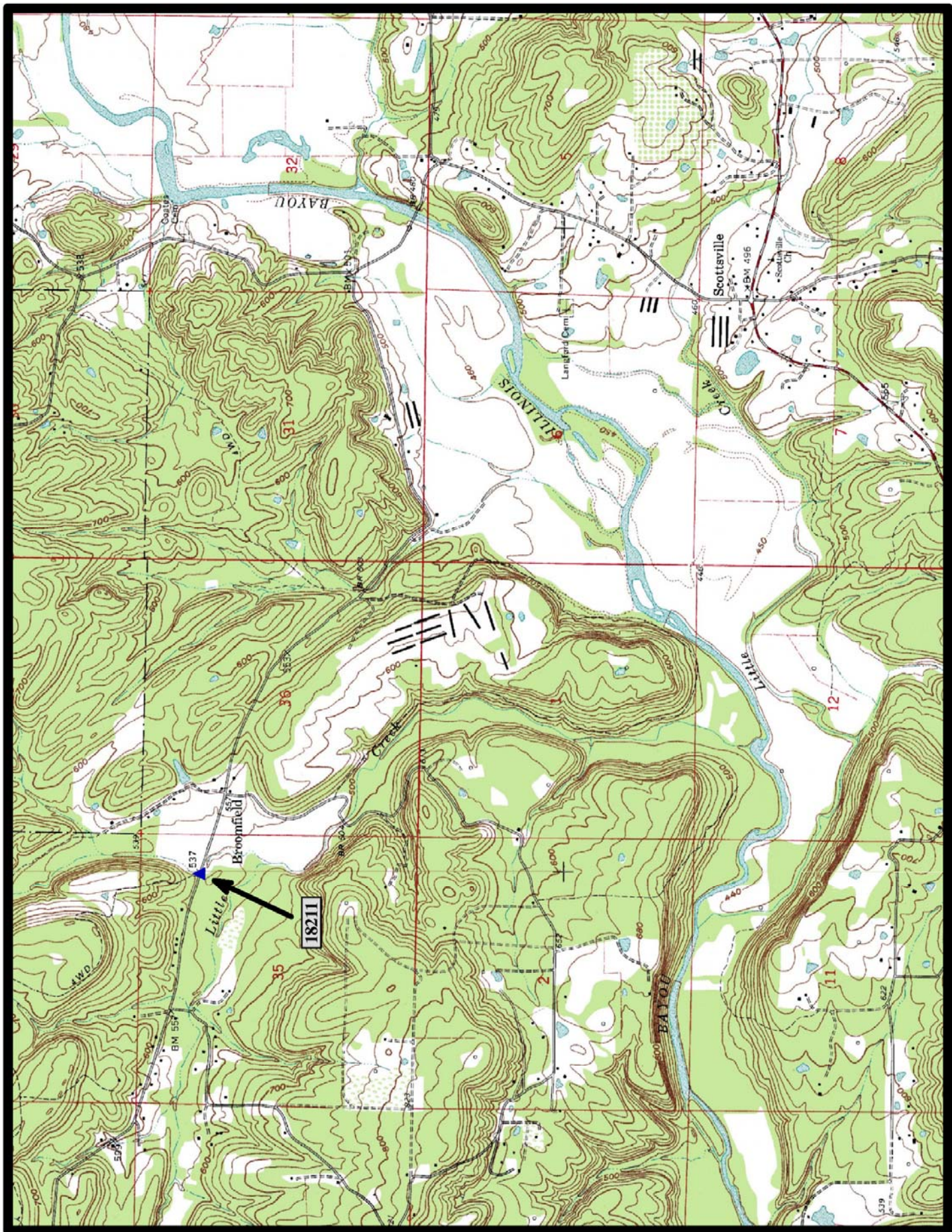
HISTORIC BRIDGE INVENTORY DATE - 2010

SHPO NUMBER -

HAER NUMBER -

DATE LISTED ON NATIONAL REGISTER -

LAT./LONG. 35:28:08.04, -93:03:54.92

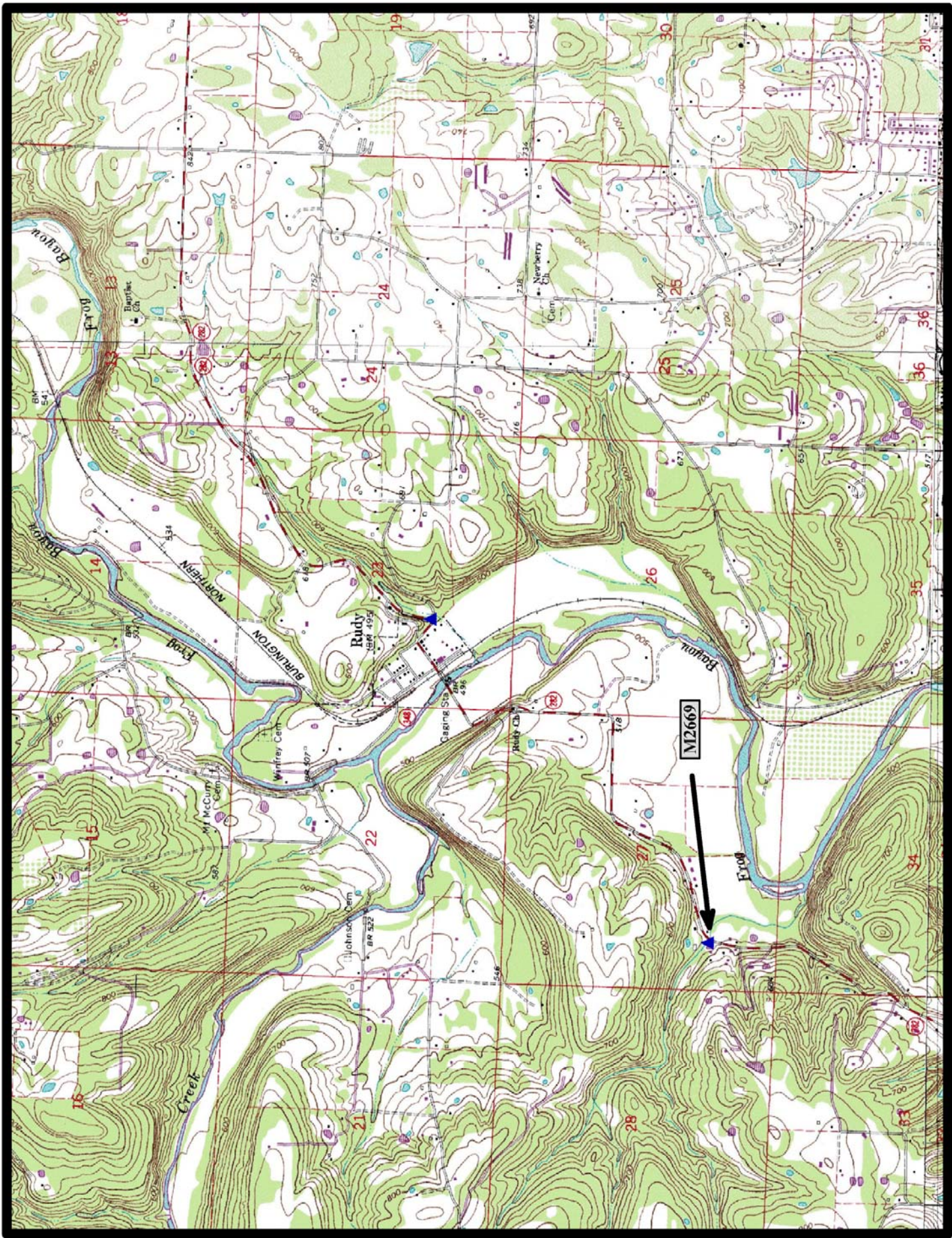


←
North

Dover 7.5 min. Quad



HISTORIC BRIDGE #M2669
STATE HIGHWAY 282
CRAWFORD COUNTY
STEEL MULTI-BEAM
CROSSES - DUKE CREEK
DATE OF CONSTRUCTION – 1940
BUILDER - WORKS PROGRESS ADMINISTRATION (WPA)
HISTORIC BRIDGE INVENTORY DATE - 2010
SHPO NUMBER -
HAER NUMBER -
DATE LISTED ON NATIONAL REGISTER -
LAT./LONG. 35:30:41.54, -94:17:17.83

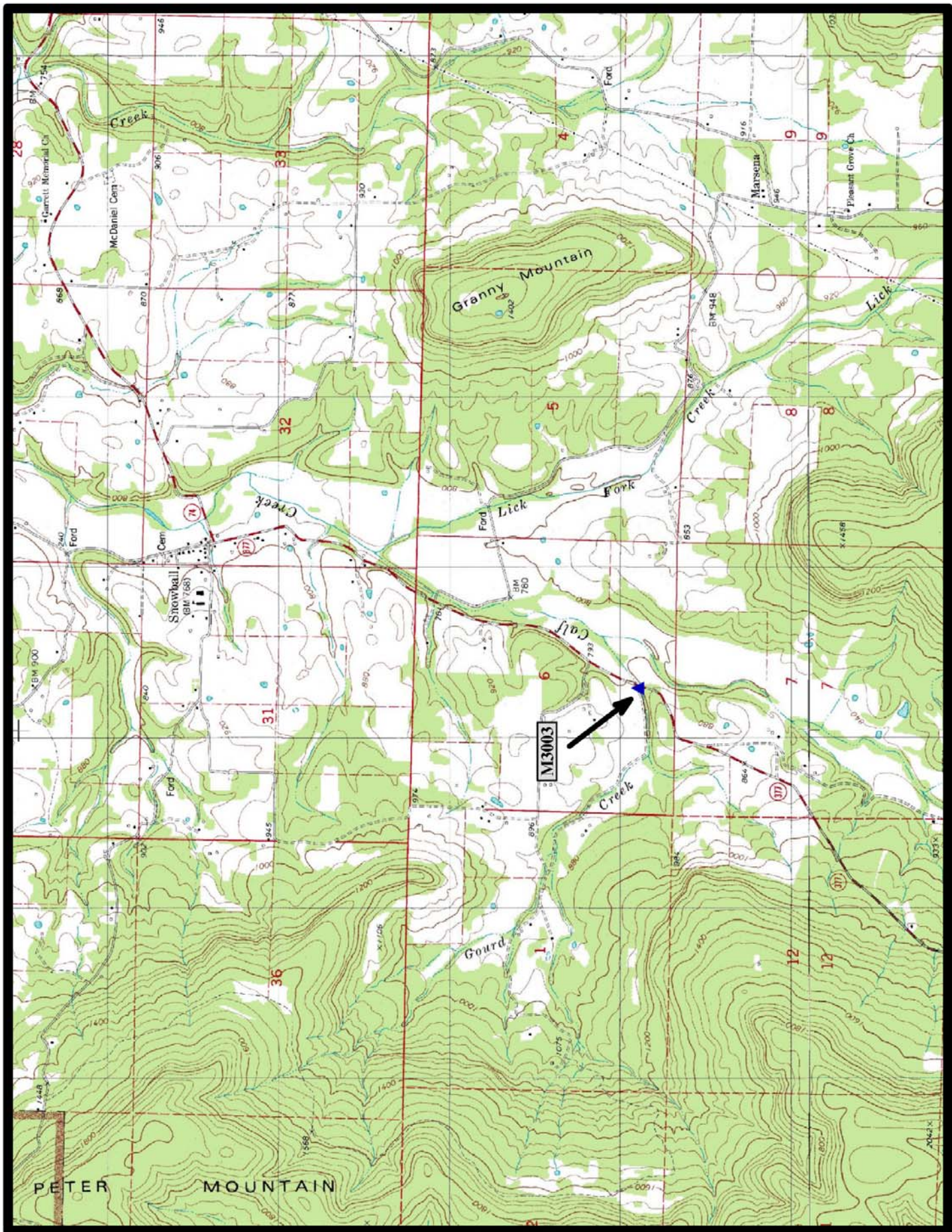


North

Rudy 7.5 min. Quad



HISTORIC BRIDGE #M3003
STATE HIGHWAY 377
SEARCY COUNTY
STEEL MULTI-BEAM
CROSSED - GOURD CREEK
DATE OF CONSTRUCTION – 1940
BUILDER - WORKS PROGRESS ADMINISTRATION (WPA)
HISTORIC BRIDGE INVENTORY DATE - 2010
SHPO NUMBER -
HAER NUMBER -
DATE LISTED ON NATIONAL REGISTER -
LAT./LONG. 35:53:02.35, -92:49:50.20

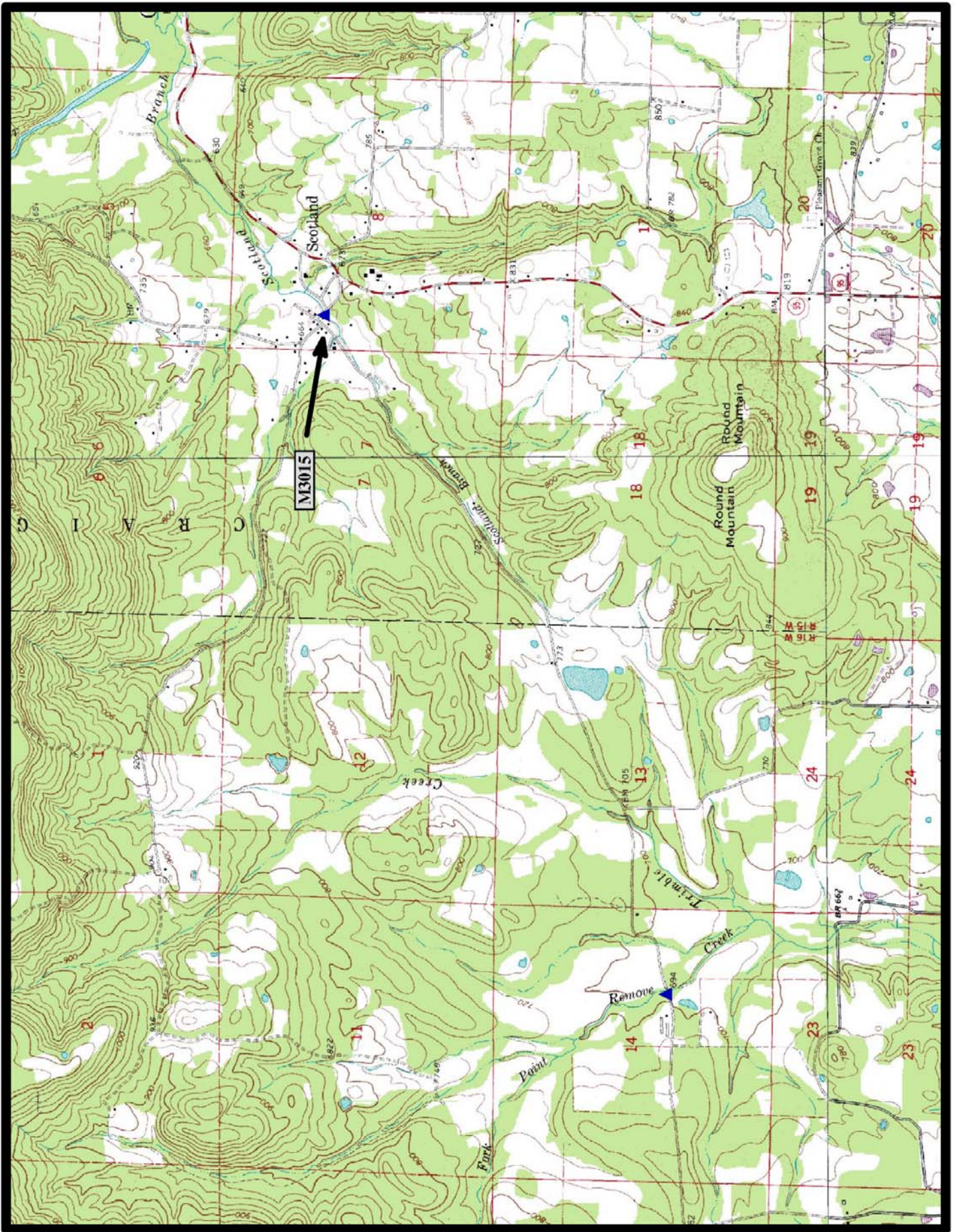


↑
North

Snowball 7.5 min. Quad



HISTORIC BRIDGE #M3015
STATE HIGHWAY 389
VAN BUREN COUNTY
STEEL MULTI-BEAM
CROSSE - SCOTLAND BRANCH
DATE OF CONSTRUCTION – 1940
BUILDER - WORKS PROGRESS ADMINISTRATION (WPA)
HISTORIC BRIDGE INVENTORY DATE - 2010
SHPO NUMBER -
HAER NUMBER -
DATE LISTED ON NATIONAL REGISTER -
LAT./LONG. 35:31:35.17, -92:36:56.77



North

Scotland 7.5 min. Quad



HISTORIC BRIDGE #M3018

STATE HIGHWAY 389

VAN BUREN COUNTY

STEEL MULTI-BEAM

CROSSES - WEST FORK POINT REMOVE CREEK

DATE OF CONSTRUCTION - 1940

BUILDER - WORKS PROGRESS ADMINISTRATION (WPA)

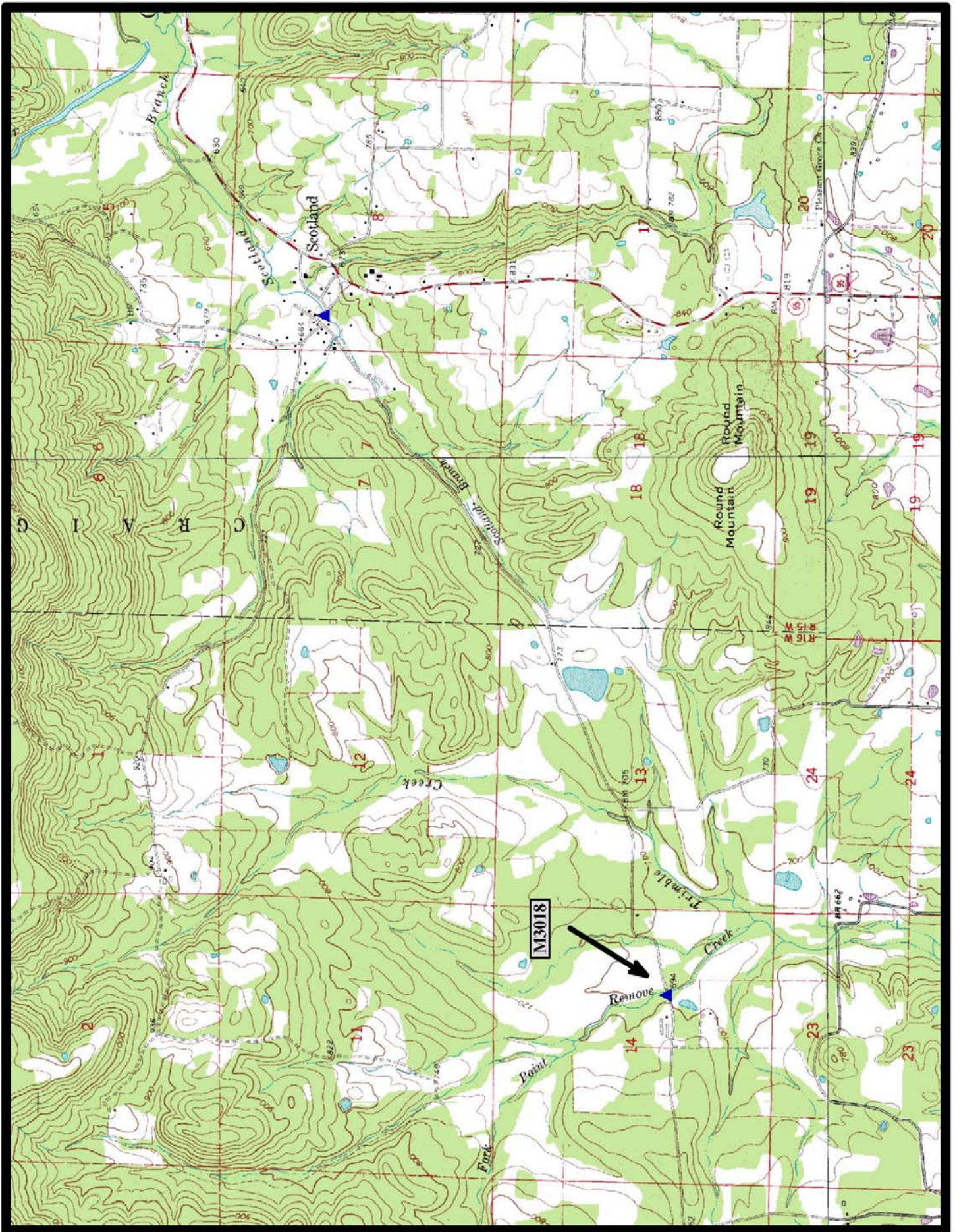
HISTORIC BRIDGE INVENTORY DATE - 2010

SHPO NUMBER -

HAER NUMBER -

DATE LISTED ON NATIONAL REGISTER -

LAT./LONG. 35:30:30.52, -92:39:35.30



North

Scotland 7.5 min. Quad